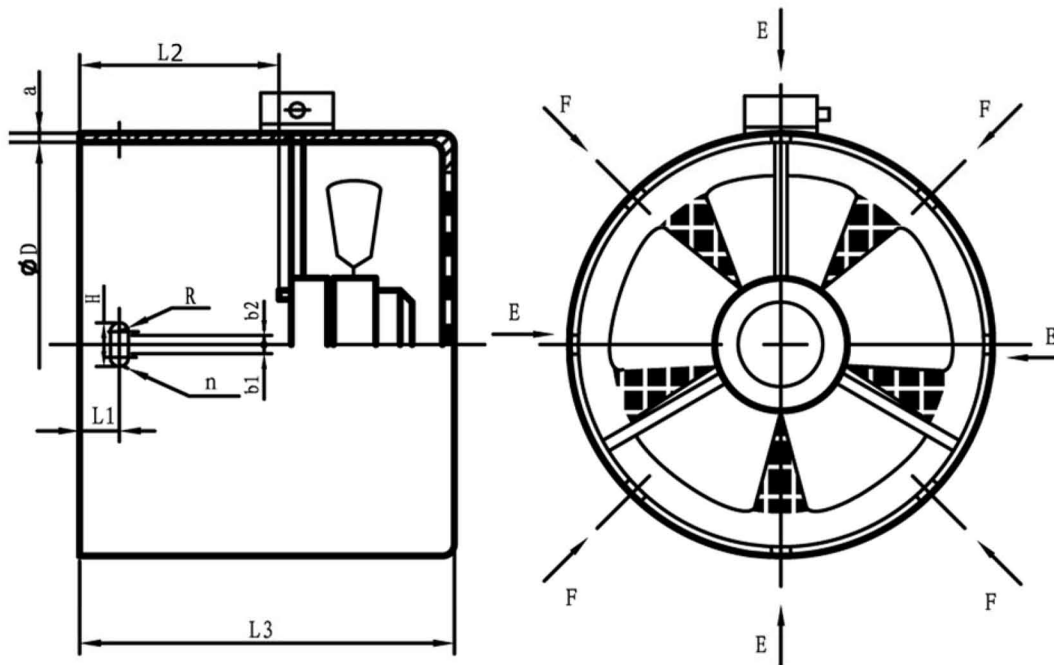




The Motor Control Warehouse



3PH and 1PH Forcevent Dimensions

Model	D	L1	L2	L3	a	H	R	n	Mounting Hole Position	Added Length To Standard Motor
G-63	121	8	67	154	1.2	7	2.5	4	E	80
G-71	138	13	77	164	1.2	7	2.5	4	E	90
G-80	154	16.5	93	180	1.2	7	2.5	4	E	90
G-90	173	17	100	187	1.5	7	2.5	4	E	90
G-100	196	19	98	187	1.5	10	3	4	E	90
G-112	219	18.5	103	191	1.5	10	3	4	E	100
G-132	256	18.5	122	223	1.5	10	3	4	E	110
G-160	311	22	154	262	2	12	3.5	4	E	120
G-180	352	35	190	295	4	5	3.5	4	E	135
G-200	393	40	190	300	4	5	3.5	4	F	105
G-225	443	40	220	370	4	6	4.5	4	F	140
G-250	482	55	240	390	4	6	4.5	4	F	160
G-280	546	65	265	420	4	9	5.5	4	F	180
G-315	614	75	310	500	4	9	5.5	4	F	220
G-355	694	82	380	580	4	7	6	4	F	270

Brake Motor Forcevent Dimensions

Model	D	L1	L2	L3	a	H	R	n	Mounting Hole Position	Added Length To Standard Motor
G-71-BM	138	13	77	214	1.2	7	2.5	4	E	140
G-80-BM	154	16.5	93	223	1.2	7	2.5	4	E	133
G-90-BM	173	17	100	239	1.5	7	2.5	4	E	142
G-100-BM	196	19	98	255	1.5	10	3	4	E	158
G-112-BM	219	18.5	103	264	1.5	10	3	4	E	173

