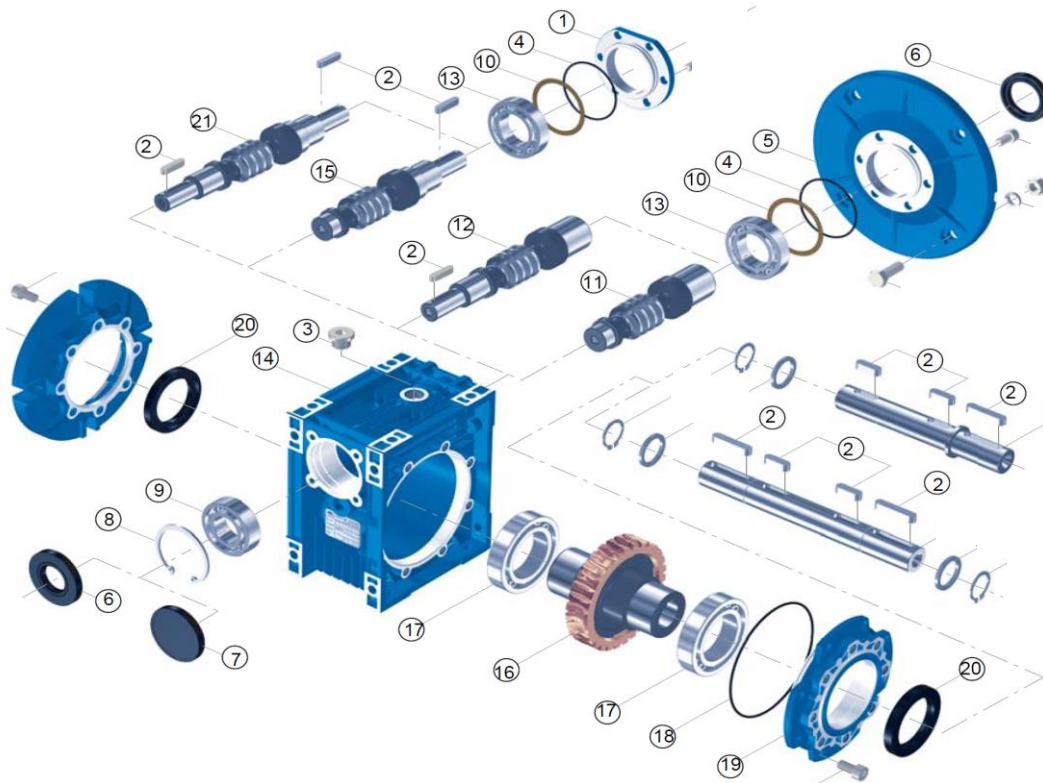


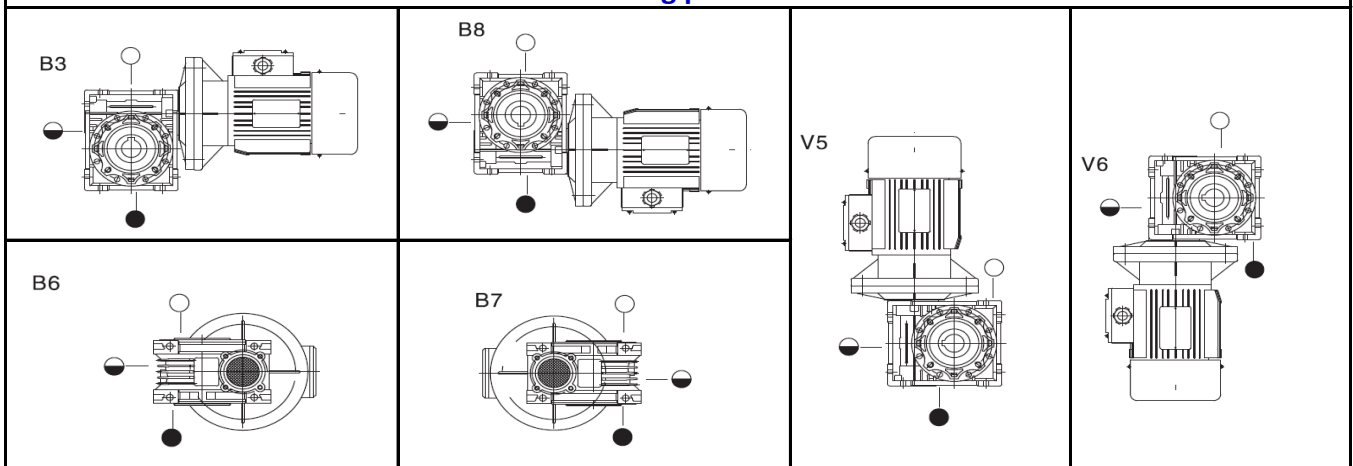
### Summary

FCNDK series worm gear units have been designed based on the modular format system. All types of IEC motors can be fitted. More details of TEC motors can be found in our separate catalogue. The versatility of the design lends itself to all types of mounting. All sizes in this range, apart from size **150**, are supplied filled with synthetic long-life oil grade ISO VG 320. Housings for sizes 25-90 are aluminium, sizes 110-150 are cast iron.



No.	Description
1	Input cover
2	Key
3	Filler plug-breather
4	O-ring (input)
5	Input flange
6	Oil seal
7	Oil seal RCA
8	Circlip
9	Bearing
10	Shim
11	Worm hollow input
12	Worm extended
13	Bearing
14	Housing
15	Worm solid input
16	Worm wheel
17	Bearing
18	O-ring (output)
19	Bearing cover
20	Oil seal
21	Worm d/extended

### Mounting positions



Sizes 25-90 do not require breather plug. Sizes 110-150 supplied with breather.

### Oil fill quantity in litres

Mtg	25	30	40	50	63	75	90	110	130	150
B3	0.02	0.04	0.08	0.15	0.3	0.55	1.0	2.0	3.0	5.5
B6-7								1.7	2.8	5.0
B8								1.7	2.8	4.5
V5								2.0	3.0	5.5
V6								2.0	3.0	5.5